

Progress Report-August 2020

Visakhapatnam

I. Project Execution Status :

I. Civil work

Name of Contractor :- M/S CeeKay Associates Pvt. Ltd.						
S.No	Description of Work	Unit	Quantity			
			As per drg	Achieved Up to July 30	Achieved up to August 30	Quantum of work done
Boiler						
1	Earthwork	Cum	7650	7650	7650	0
2	P.C.C.	Cum	220	202	202	0
3	R.C.C.	Cum	2285	2244	2244	0
4	Formwork	Sqm	7000	6900	6900	0
5	Reinforcement work	Mt	424	412	412	0
6	Brick work	Cum	62	62	62	0
MSW Pit						
1	Earthwork	Cum	20000	18980	18980	0
2	P.C.C. and Plum Conc.	Cum	721	459	459	0
3	R.C.C.	Cum	7428	5882	6310	428
4	Formwork	Sqm	16396	11707	12862	1155
5	Reinforcement work	Mt	1491	1092	1149	57
6	Brick work	Cum	150	62	70	8
TR Hall						
1	Earthwork	Cum	7500	6805	6805	0
2	P.C.C. and Plum Conc.	Cum	180	121	121	0
3	R.C.C.	Cum	2441	2072	2072	0
4	Formwork	Sqm	6824	5445	5445	0
5	Reinforcement work	Mt	550	398	398	0
6	Brickwork	Cum	110	97	97	0
ACC						
1	Earthwork	Cum	1520	1515	1515	0
2	P.C.C. and Plum Conc.	Cum	80	27	27	0
3	R.C.C.	Cum	735	727	732	5
4	Formwork	Sqm	3970	3895	3930	35
5	Reinforcement work	Mt	137	135	135	0
TG Building						
1	Earthwork	Cum	4280	3943	3943	0
2	PCC and Plum Conc.	Cum	140	136	136	0

3	R.C.C.	Cum	1750	1710	1714	4
4	Formwork	Sqm	7275	7190	7200	10
5	Reinforcement work	Mt	280	274	275	1
6	Brick work	Cum	450	384	391	7
Flue Gas Cleaning System						
1	Earthwork	Cum	3300	3257	3257	0
2	P.C.C. and Plum Conc.	Cum	145	145	145	0
3	R.C.C.	Cum	765	746	746	0
4	Formwork	Sqm	1630	1630	1630	0
5	Reinforcement work	Mt	125	125	125	0
6	Brickwork	Cum	50	50	50	0
WTP						
1	Earthwork	Cum	3200	630	630	0
2	P.C.C. and Plum Conc.	Cum	285	179	182	3
3	R.C.C.	Cum	1300	844	895	51
4	Formwork	Sqm	5520	3271	3751	480
5	Reinforcement work	Mt	250	176	183	7
6	Brick work	Cum	100	52	55	3
Pipe rack						
1	Earthwork	Cum	1350	590	590	0
2	P.C.C. and Plum Conc.	Cum	72	31	31	0
3	R.C.C.	Cum	260	191	191	0
4	Formwork	Sqm	850	580	580	0
5	Reinforcement work	Mt	45	28	28	0
Weigh Bridge & Approaches						
1	Earthwork	Cum	1231	375	375	0
2	P.C.C. and Plum Conc.	Cum	45	6	10	4
3	R.C.C.	Cum	350	47	109	62
4	Formwork	Sqm	1300	257	380	123
5	Reinforcement work	Mt	54	13	17	4
6	Brickwork	Cum	10	0	8	8

➤ **MSW PIT AREA:**

1. RCC work completed for 18.675mtr level Beam at C grid of MSW Pit area.
2. RCC work is in progress for 23mtr level tie beam at C grid of MSW Pit area.
3. Reinforcement & formwork is in progress for 23mtr level Beam at 11th grid.
4. Reinforcement & formwork is in progress for columns & wall up to 8mtr level at 1st Grid.
5. Brickwork & plastering completed at storeroom of E&I room.

➤ **Boiler feeder:**

1. Reinforcement & Formwork is in progress for 23mtr slab at grid 1-4 of boiler feeder area.
2. Reinforcement & Formwork is in progress for 27mtr level tie beam at H grid of Boiler feeder area
3. RCC work is in progress for 27mtr level tie beam at H grid of Boiler feeder area.

4. Reinforcement work is in progress for H Grid Brackets at boiler feeder area.
5. Stair case work up to 11.770mtr level completed for boiler feeder area.

➤ **TG building:**

1. Brickwork is in progress for A1to D1 of TG Building.
2. False flooring work is in progress at control room of TG Building

➤ **WTP:**

1. Flooring completed for fire water tank pump foundations.
2. Reinforcement, Formwork & insert plate fixing work is in progress for clear water tank slab.
3. RCC work completed for Wall up to 5mtr level at FAB tank
4. Outside Plastering completed at Chemist laboratory room.
5. Reinforcement & shuttering work is in progress for wall tube settler tank.
6. RCC Work completed for slab of chlorine tank.

➤ **Pipe rack &LDO Tank**

1. Completed

➤ **FGCS:**

1. Plastering work for completed for AC room of FGCS

➤ **Weigh Bridges & Approaches**

1. Brickwork Completed for control room of Weigh Bridge.
2. RCC work completed for slab of Culvert.
3. Lay out marking for weigh bridge approaches.
4. Reinforcement Fixing for Side Kerb wall at Weigh Bridges.

➤ **ACC**

1. RCC work completed for staircase up to 13mtr level.
2. Lay out marking for Pump Foundations & Water Tank.

Site progress photos:

➤ **Boiler area:**



➤ MSW Pit & Boiler Feeder area.



➤ ACC area



➤ TG building



➤ FGCS area



➤ Weigh Bridge & Approaches area



➤ WTP



Construction of RCC Chimney 60M						
S.No.	Description of Work	Unit	Quantity			
			As per drg	Achieved Upto Jan 30	Achieved Upto Feb 28	Quantum of work done
1	Earth work	Cum	647	647	647	0
2	P.C.C	Cum	28	28	28	0
3	R.C.C.	Cum	612	588	588	0
4	Formwork & Slip Form work	Sqm	1630	1630	1630	0
5	Reinforcement work	MT	85	85	85	0

➤ Chimney



II. Overall site view





i. Mechanical work:

- Boiler details:

- **Both Boilers Hydro Test completed on 28.08.2020 witnessed by Dy.CIB**
- Boiler structure column erection is completed including boiler top canopy structure.
- Handrails erection and fixing work 70% completed.
- Platforms for Boiler fixing work 95% completed
- Total 9964 out of 10964 joints welded as on 29.08.2020 in Boiler 1 & 2.
- Boiler pressure parts Radiography Test for 1600 welding joints 100% done in both boilers.
- SR for 280 joints and 280 joints done for Boiler No 1 & 2 respectively.
- Refractory SS Anchors 25698 and 25698 Nos welded in water wall Boiler No 1 and 2 respectively
- Stoker Boxes erected in both boilers and further side wall shell, rear and front wall frame structure erection in progress

- **Boiler 1:**

1. Economizer, Rear water wall coils, Rear screen wall, front screen wall, front water wall, super heater coils, panelized tube wall, Right and left water wall erection and joints welding completed.
2. Economizer casing erection completed & bottom hoppers erection done and Bending flue gas casing completed and Economizer seals welding completed and outer seals fit up in progress
3. Water wall flat SS seals welding completed,
4. Raisers erection and welding completed, Down-comers Erection & welding completed
5. Primary Air preheater casing and coils erection & welding completed, and Secondary Air Preheater coils erection & welding completed
6. Super heater Connecting pipes erection and welding completed

7. Feed water pipe and support hanger erection done and piping for mixing header erection done in Boiler proper piping.
8. Economizer access doors plates and blower support plates fit up done and Water wall access doors fit up done.
9. Down-comer pipe supports fit up completed
10. Centralized blow down & centralized drainage header erection done
11. CBD tank erection done & silencer piping erection done
12. Terminal header and piping erection and welding completed
13. Buck stay erection completed, and alignment completed
14. Soot blowers shifting done and erection completed
15. Slag discharge machine 2Nos erection done
16. Hydraulic power pack erection done
17. Vibrating conveyor and magnetic separator erection done
18. 14-meter level platform erection done along with checkered
19. Stoker Z frames, structure, driving device cylinders, feeder support structure erection done, inclined carlings erection, and alignment completed, feeder structure erection and welding done
20. Piping for heater outlet and heater inlet, Recirculation line, Drum to SCAPH piping and Feed station piping fabrication and erection done and welding completed
21. IBD line erection done and welding completed till 14mtr
22. Water wall anchors 25698 Nos welding completed till date
23. SA fan erection and alignment completed along with grouting for 2 Nos
24. PA fan erection and alignment completed along with grouting for 2 Nos
25. Water wall biscuits 2300 out of 2300 completed
26. Water wall SS seal plates welding completed
27. Water wall and super heater drain lines fabrication done and welding completed
28. Drains and piping supports fit up completed
29. PA SCAPH casing erection completed and headers erection done
30. Feeder assembly erection completed
31. Feeder lower chute front wall , side walls, back wall erection in progress
32. Water wall headers locking seal plates fit up and welding
33. CBD line fabrication & erection in progress
34. Water wall & super heater Dummy welding completed
35. Deaerator and deaerator tank erection done
36. Grate boxes 4nos erection completed
37. Vent line till valves fabrication and welding completed
38. HP dozing line fit up till valve completed
39. Buckstay guide supports erection completed and lock plates welding done
40. Silencers erection completed
41. Burner fans erection done
42. All access doors and manhole and boxes welding completed
43. Furnace expansion bellow erection completed and welding in progress
44. Furnace feed hopper supporting structure erected
45. Boiler hydro test pending jobs attended and Hydro test completed on 28.08.2020.
46. Drum side canopy structure erection completed
47. Top plate chequered plate platform erection in progress
48. Big ash box (2nd and 3rd pass hopper) erection in progress
49. Stoker shell- side wall frames, front wall frame, rear wall frame, front arch frame and rear arch frame erection and welding in progress

50. Boiler hydro test works- valves tightening, temporary supports removing, boom devices loading, piping supports erection, water fill up line fabrication, water filling, fins and cut fins welding done

➤ **Boiler 2:**

1. Economizer, Rear water wall coils, Rear screen wall, front screen wall, front water wall, super heater coils, panelized tube wall, Right and left water wall erection and joints welding completed.
2. Economizer casing erection completed & bottom hoppers erection done and Bending flue gas casing completed and Economizer seals welding completed and outer seals fit up in progress
3. Water wall flat SS seals welding completed,
4. Raisers erection and welding completed, Down-comers Erection & welding completed
5. Primary Air preheater casing and coils erection & welding completed, and Secondary Air Preheater coils erection & welding completed
6. Super heater Connecting pipes erection and welding completed
7. Feed water pipe and support hanger erection done and piping for mixing header erection done in Boiler proper piping.
8. Economizer access doors plates and blower support plates fit up done and Water wall access doors fit up done.
9. Down-comer pipe supports fit up completed
10. Centralized blow down & centralized drainage header erection done
11. CBD tank erection done & silencer piping erection done
12. Terminal header and piping erection and welding completed
13. Buck stay erection completed, and alignment completed
14. Soot blowers shifting done and erection completed
15. Slag discharge machine 2Nos erection done
16. Hydraulic power pack erection done
17. Vibrating conveyor and magnetic separator erection done
18. 14-meter level platform erection done along with checkered
19. Stoker Z frames, structure, driving device cylinders, feeder support structure erection done, inclined carlings erection, and alignment completed, feeder structure erection and welding done
20. Piping for heater outlet and heater inlet, Recirculation line, Drum to SCAPH piping and Feed station piping fabrication and erection done and welding completed
21. IBD line erection done and welding completed till 14mtr
22. Water wall anchors 25698 Nos welding completed till date
23. SA fan erection and alignment completed along with grouting for 2 Nos
24. PA fan erection and alignment completed along with grouting for 2 Nos
25. Water wall biscuits 2300 out of 2300 completed
26. Water wall SS seal plates welding completed
27. Water wall and super heater drain lines fabrication done and welding completed
28. Drains and piping supports fit up completed
29. PA SCAPH casing erection completed and headers erection done
30. Feeder assembly erection completed
31. Leaking buckets welding completed
32. Feeder lower chute front wall , side walls, back wall erection in progress
33. Water wall headers locking seal plates fit up and welding
34. CBD line fabrication & erection in progress
35. Water wall & super heater Dummy welding completed
36. Connecting platform between Boiler 1 & 2 drum platform done
37. Grate boxes 4nos erection completed

38. Vent line till valves fabrication and welding completed
39. HP dozing line fit up till valve completed
40. Buckstay guide supports erection completed and lock plates welding done
41. Silencers erection completed
42. Burner fans erection done
43. All access doors and manhole and boxes welding completed
44. Furnace expansion bellow erection completed and welding in progress
45. Furnace feed hopper supporting structure erected
46. Boiler hydro test pending jobs attended and Hydro test completed on 28.08.2020.
47. Drum side canopy structure erection completed
48. Top plate chequered plate platform erection in progress
49. Big ash box (2nd and 3rd pass hopper) erection in progress
50. Stoker shell- side wall frames, front wall frame, rear wall frame, front arch frame and rear arch frame erection and welding in progress
51. Boiler hydro test works- valves tightening, temporary supports removing, boom devices loading, piping supports erection, water fill up line fabrication, water filling, fins and cut fins welding done
52. Canopy sheeting work is in progress



Boiler-2 stoker back wall frame structur



Boiler-2 stoker front wall frame and arch frame



Boiler2 rear arch frame and beam



Boiler-2 stoker side wall panel



Boiler2 rear wall frame middle



Boiler-2 drum side canopy structure



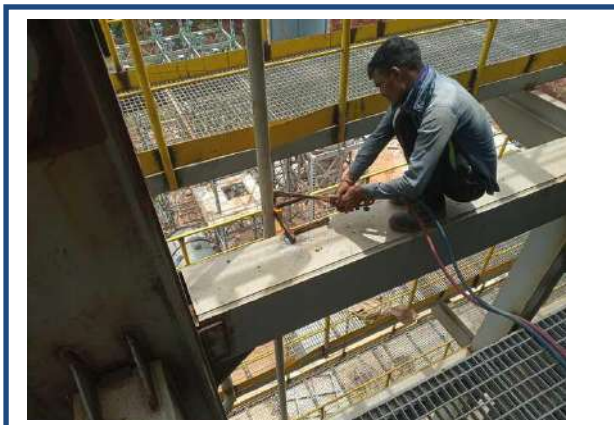
Boiler2 bellow welding



Boiler2 stoker shell welding



Boiler2 economizer casing welding



Boiler2 temporary supports removing



Boiler-2 bis ash box hopper erection



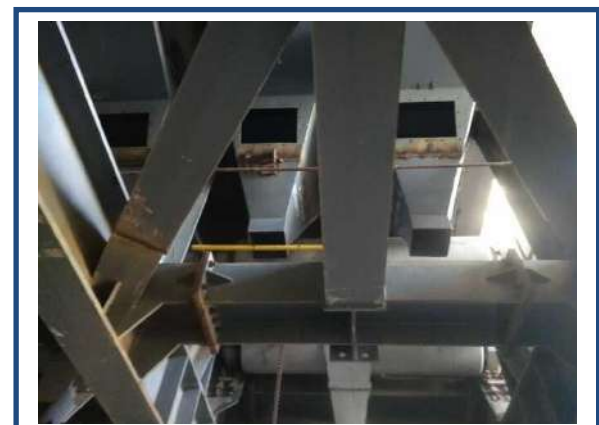
Boiler-2 silencers erection done



Boiler-2 top plate platform chequered plate



Boiler-2 feed hopper support structure



Boiler2 leaking buckets welding completed



Boiler-2 feed hopper material shifting



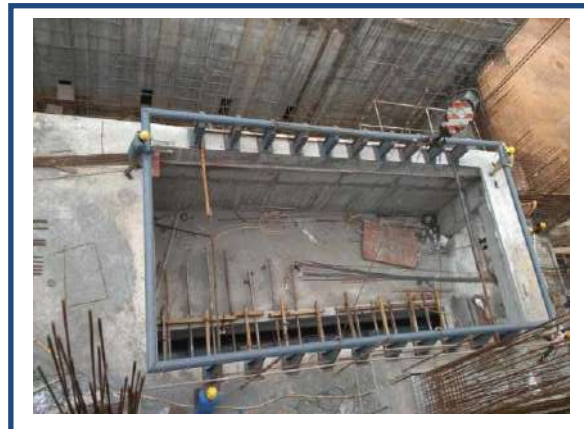
Boiler1 back wall frame columns erection



Boiler1 rear arch frame erection



Boiler-1 buckstay guide supports



Boiler-1 feed hopper support structure



Boiler-1 economizer seals welding



Boiler-1 piping supports



Boiler-1 rear frame and arch frame



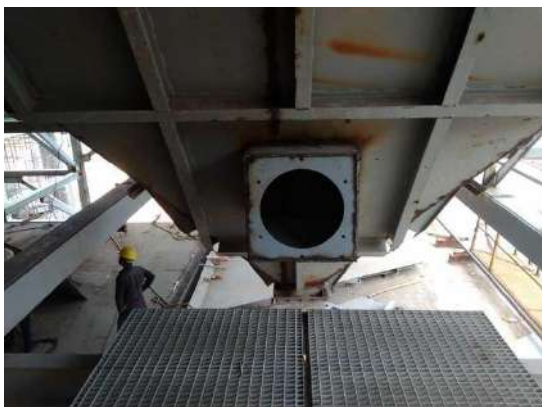
Boiler- burners erection done



Boiler-1 economizer beam seals welding



Boiler-1 drum side canopy structure



Boiler-1 economizer bottom hopper door



Boiler-1 furnace bellow



Boiler-1 big ash box erection



Boiler-1 rear wall frame middle



Boiler-1 superheater supports erection



Boiler-1 top manhole doors fit up



Boiler-1 buckstay corner plates



Boiler-1 top chequered plate fit up



Boiler-1 silencers



Hydraulic pump for hydro test



Pressure gauge at DRUM



Pressure gauge at Main steam header

- 240 Tons DM water procured from M/s Sarada Metals for Boiler Hydro Test.



Deputy Chief Inspector of Boilers Hydro Test Witness



Boiler-1 terminal header checking



Boiler-2 Terminal header checking



Boiler-2 checking



Boiler-1 checking

Boiler-1 and Boiler-2 Hydro test completed

BOILER IBR - JOINTS DETAILS							
S.No	SYSTEM NAME	SUB-SYSTEM	TOTAL NO.OF JOINTS	BOILER-1		BOILER-2	
				TOTAL NO.OF JOINTS COMPLETED	Balance	TOTAL NO.OF JOINTS COMPLETED	Balance
1		FRONT WW	432	432	0	432	0
		FRONT SCREEN WW	256	256	0	256	0
		REAR SCREEN WW	432	432	0	432	0
		REAR WW	588	588	0	588	0
		LEFT WW	264	264	0	264	0
		RIGHT WW	264	264	0	264	0
		PANELIZED TUBE WW	270	270	0	270	0
2	RAISER	RAISER	108	108	0	108	0
		DRUM TO PRIMARY SUPERHEATER HEADER	26	26	0	26	0
3		WATER WALL HEADER TO HEADER	4	4	0	4	0

	BOTTOM HEADER TO HEADER CONNECTION	PENELIZED PANEL BOTTOM HEADER TO FRONT SCREEN BOTTOM HEADER	3	3	0	3	0
4	DOWNCOMER	DOWNCOMER	100	100	0	100	0
4	SUPER HEATER	SUPER HEATER COIL	294	294	0	294	0
		FINAL SUPERHEATER PIPE	22	22	0	22	0
		CONNECTING PIPING	40	40	0	40	0
5	ECONOMIZER	ECONOMIZER COIL	432	432	0	432	0
6	AIR PREHEATER	AIR PREHEATER	216	216	0	216	0
7	BOILER PROPER PIPING (71N05-1-0)	WATER WALL DRAIN	420	420	0	420	0
		SUPERHEATER DRAIN	318	318	0	318	0
8	PIPE OF FEED WATER (71N05-2-0)	PIPE OF MIXING HEADER (71N05-2-1-0)	31	31	0	31	0
9		FEED WATER PIPE AND HUNGER (71N05-2-2-0)	23	23	0	23	0
10		PIPE OF RECIRCULATING (71N05- 2-3-0)	44	44	0	44	0
11		PIPE OF HEATER INLET (71N05-2-4-0)	41	41	0	41	0
12		PIPE OF HEATER OUTLET (71N05-2-5-0)	46	46	0	46	0
13	PIPING OF AIR PREHEATER (71N05-3-0)	PIPING OF AIR PREHEATER (71N05-3-0)	48	48	0	48	0
14	PIPE OF CONTROL PLATFORM OF FEED WATER (71N05-4-0)	MAIN STATION	166	166	0	166	0
		DRAINS	50	0	50	20	30
15	CONTINUE BLOWDONE FLASH TANK & PIPE (71N05-5-0)		30	0	30	0	30
16	INTERMITTENT BLOWDOWN FLASH TANK & PIPE (71N05-6- 0)		20	0	20	0	20
17	DIAGRAM OF BLOW- DOWN SYSTEM (TWO- BOILERS IN COMMON)(71N05-7-0)		150	0	150	0	150
18	LAYOUT PLAN OF STEAM SOOT BLOWING PIPE (71N05-8-0)		240	0	240	0	240
19	BOILER PROPER PIPING (71N05-1-0)	BOILER PROPER PIPING (Vents above valve)	20	0	20	0	20
20	DUMMY		84	84	0	84	0
	TOTAL		5482	4972	510	4992	490
TOTAL JOINTS COMPLETED					9964		

Radiography & Stress Reliving Details

RADIOGRAPHY & STRESS RELIVING DETAILS		
	BOILER -1	BOILER -2

S.NO	SYSTEM NAME	No of Joints RT required per Boiler	No of Joints RT Completed in Boiler-1	Repair & RT balance Joints in Boiler-1	SR Joints completed in Boiler-1	No of Joints RT Completed in Boiler-2	Repair & RT balance Joints in Boiler-2	SR Joints completed in Boiler-2
1	WATER WALL	260	238	22	0	259	1	0
2	RAISER	112	112	0	0	112	0	0
3	DOWN COMER	100	99	1	4	100	0	4
4	SUPERHEATER	59	42	17	276	42	17	276
5	ECONOMISER	43	43	0	0	43	0	0
6	AIR PREHEATER	26	26	0	0	26	0	0
7	BOILER PROPER PIPING	37	35	2	0	27	10	0
8	FEED CONTROL STATION	19	19	0	0	19	0	0
	TOTAL	656	614	42	280	628	28	280

NOTE- Nos of stress Relieving joints required in Boiler-1 - 280nos & Boiler 2 - 280nos

FGCS Work:

1. Scrubber 1 & 2 silo erection completed full welding work under progress.
2. Hydrated lime silo erection completed..
3. Quick lime silo erection completed..
4. Waste silo 1 & 2 erection completed full welding work under progress..
5. Scrubber 1 & 2 total erection completed including platform & Hand rails.
6. Quick lime silo structure erection completed.
7. Bag filter 2 columns erection completed and tie beams and floor beams erection is in progress
8. Bag filter 1 columns erection is completed tie beams & floor beams erection is in progress
9. Bag filter 2, 4 collection hoppers assembly completed.
10. Waste silo structure erection completed.
11. Hydrated lime silo structure erection completed.
12. Bag filter 2 recycling Hopper assembly & welding is under progress.
13. Recycling hoppers assembly & welding under progress.





All 6 Silos Erection completed

1. Erection & commissioning of EOT crane is completed
2. Third party inspection of Load test for certification completed.



EOT Erection



Load Test for EOT Crane



WTP:

1. Engineer arrived to site for material inspection.
2. MOM prepared for the work.



WTP Work:

Work completed

Structure work: TOTAL – 220 TONS ERECTION COMPLETED.**➤ Deaerator Structure**

1. Deaerator Structure erection Done
2. Deaerator structure ties erection and welding under progress.
3. Deaerator Erection done
4. Deaerator 3mtr elevation platform fabrication completed

➤ TG Crane Girders

1. Crane Girder Erection Done
2. EOT crane rail erection done.

➤ TG Roofing

1. Roof truss TAD1,TAD2,TAD3,TAD4,TAD5,TAD6 erection Completed
2. Gable end 2 Nos columns erection completed
3. Vertical Bracing [VBR1,VBR2,VBR3,VBR4,VBR5 erection Completed.
4. Column erection completed

➤ Pipe Rack

1. Total Trestles 15 Nos Erection Completed & Grouted.
2. Total Galleries 12 Nos Erection Completed & welding work under progress.

➤ TG Staircase

1. TG Staircase gallery Erection Done

➤ MSW Pit

1. Crane Girder Web Plate, Flange Plate & Stiffener Plate Cutting Under Progress.

➤ Compressors

1. All Compressors are Shifted from Material yard to Compressor Room
2. All Compressors are in position in Compressor room.
3. 1 & 5 m3 Air receivers shifted from material yard to compressor room
4. 5 m3 Air receivers are in Position



TG Roof Structure erection



Truss bracings erection work



Gable end columns erection



Pipe rack gallery erection



Pipe rack structure

Deaerator structure

LDO & WTP



Compressor Area

Machinery Hiring:

1. 175 ton & 50m Boom length mobile higher capacity crane hired.

2. 12 ton hydra hired for loading purpose.

175 Ton Crane - LOG SHEET						
S.no	Date	Timings	Working Hrs	Area of Working	Erection Work	Remark
1	14.07.2020	02:00 Pm to 06:30 Pm	5	Pipe Rack	Gallery -01,02&03	Work Started
2	15.07.2020	08:30 Am to 06:30 Pm	10	Pipe Rack & TG	Gallery -04,06 & TG Staircase	Galleries & TG staircase erection
3	16.07.2020	08:30 Am to 07:30 Pm	11	Pipe Rack	Gallery-07, 6 TG Girders & Rails	Crane under maintenance for 3hrs for battery & rope changing, Counterweight added for TG girder erection purpose
4	17.07.2020	08:30 Am to 06:30 Pm	10	TG & Boiler	4 TG Girders & Rails, Boiler Grate Box & 2nd & 3rd Pass Hoppers	TG Girders & Rail erection, Boiler grate box & 2nd & 3rd pass hoppers shifting to 14m slab
5	18.07.2020	08:30 Am to 06:30 Pm	10	Boiler	Boiler grate box, 2nd & 3rd pass hoppers, burner fans shifting	Boiler grate box, 2nd & 3rd pass hoppers, burner fans shifting has been shifted to 14mtr slab
6	19.07.2020	08:30 Am to 02:00 Pm	5.5	Boiler	Boiler Grate Box & 2nd & 3rd Pass Hoppers shifting	Boiler grate box, 2nd & 3rd pass hoppers, burner fans shifting has been shifted to 14mtr slab
7	20.07.2020	08:30 Am to 06:30 Pm	10	Deaerator	Deaerator Columns erection	Deaerator 6 columns gallery assembly erection completed.
8	21.07.2020	08:30 Am to 06:30 Pm	10	Deaerator	Deaerator Columns & Beams erection	Deaerator 2 columns gallery assembly erection & Beam erection work under progress completed.
9	22.07.2020	08:30 Am to 06:30 Pm	10	Deaerator & Pipe rack	Deaerator Beams & gallery 8 erection	Shifting of storage vessel, 2nos Deaerator beams & gallery 8 erection
10	23.07.2020	08:30 Am to 06:30 Pm	10	Deaerator	Deaerator Beams & Sole plate erection	Deaerator Beams erection & sole plates shifted on to the deaerator base.
10	24.07.2020	08:30 Am to 06:30 Pm	10	Deaerator	Deaerator & storage vessel erection	Deaerator & storage vessel erection completed
11	25.07.2020	08:30 Am to 06:30 Pm	10	FGCS & Boiler	FGCS Staircase columns erection & Start up burners & bottom hoppers shifted	FGCS Staircase columns erection & Start up burners & bottom hoppers shifted to 14m slab of boiler
12	26.07.2020	08:30 Am to 02:00 Pm	5.5	FGCS	Waste Silo -2 erection	Waste silo hopper & shell erection completed
13	27.07.2020	08:30 Am to 06:30 Pm	10	FGCS	Waste Silo -1 erection	Waste silo hopper erection completed
14	28.07.2020	08:30 Am to 06:30 Pm	10	TG building	TG Roof Truss columns	6 columns erection completed

15	29.07.2020	08:30 Am to 06.30 Pm	10	TG building & Boiler	Boiler 2nd & 3rd pass hoppers shifting, TG EOT LT assembly erection	Boiler 2nd & 3rd pass hoppers shifted to 14mtr of boiler
16	30.07.2020	08:30 Am to 06.30 Pm	10	TG building	TG EOT CT assembly erection, shifting of EOT Panels & accessories, TG Columns erection	TG EOT CT erection completed, EOT panels, accessories were shifted on to EOT, TG Columns erection completed.
17	31.07.2020	08:30 Am to 06.30 Pm	10	TG building	TG Column ties erection & PRDS, OHT, Valves shifted.	TG Column ties erection & PRDS, OHT, Valves shifted to TG 13m slab
18	01.08.2020	08:30 Am to 06.30 Pm	10	TG building	TG roof truss erection work	TAD4 & TAD5 erection completed. VBR erection work under progress.
19	02.08.2020	08:30 Am to 02.00 Pm	5.5	TG building	TG roof truss erection work	VBR4 erection completed.
20	03.08.2020	08:30 Am to 06.30 Pm	10	TG building	TG roof truss erection work	TAD6 & VBR5 erection work under progress.
21	04.08.2020	08:30 Am to 06.30 Pm	10	TG building	TG roof truss erection work	TAD3 & VBR5 erection work under progress.
22	05.08.2020	08:30 Am to 06.30 Pm	10	TG building	TG roof truss erection work	TAD2 & VBR3 erection work under progress.
24	06.08.2020	08:30 Am to 06.30 Pm	10	TG building	TG roof truss erection work	TAD1 & VBR3 & VBR2 erection work under progress.
25	07.08.2020	08:30 Am to 06.30 Pm	10	TG building	TG roof truss erection work	VBR1 erection work under progress.
26	08.08.2020	08:30 Am to 06.30 Pm	10	FGCS	Scrubber & hydrated lime silo erection	Scrubber & hydrated lime silo erection completed
27	09.08.2020	08:30 Am to 01.30 Pm	5	FGCS	Quick lime silo & Quick lime silo Brackets erection	Quick lime silo & Quick lime silo Brackets erection
28	10.08.2020	08:30 Am to 01.30 Pm	10	FGCS	Scrubber 1 erection	Scrubber 1 erection completed
29	11.08.2020	08:30 Am to 01.30 Pm	10	FGCS	Scrubber 2 erection	Scrubber 2 erection completed
30	12.08.2020	08:30 Am to 06.30 Pm	10	TG & Boiler	TG gable end column erection & Boiler feed hopper	Gable end column erection done & Boiler-1 Feed hopper support structure erection done
31	13.08.2020	08:30 Am to 06.30 Pm	10	TG & Boiler	FGCS- Ash silo & Boiler feed hopper	Gable end column erection done & Boiler-2 Feed hopper support erection done & plates shifting

ii. Electrical work

- 95% of cable tray erection has been completed at TG building 0mtr Cable Gallery.
- Cable tray supports and platform Erection work at boiler 0 Mtr is in progress.
- LTPCC panel fixing and bus bar tightening has been completed.
- Boiler#1VFD panel erection & Bus bar tightening has been completed
- Boiler#1 ID fan VFD drive panel erection has been completed.
- 100% cable tray erection has been completed at TG building 8Mtr
- TG 8 Mtr cable tray earth flat connectivity work is in progress.
- 95% of cable tray erection has been completed in Compressor Room.
- Compressor PDB#2 panel bus bar tightening has been completed and panel charged.
- Cable tray supports and erection is in progress from TG cable gallery to pipe rack gallery.
- Cable tray supports and erection is in progress in pipe gallery towards WTP.
- Transformer Jumpers fixing and bus bar tightening work is in progress
- Cable tray raisers erection has been completed in pump house control room
- Pump house MCC panel has been charged.
- WTP MCC and PLC panels has been erected in position.
- Incoming cable tray raisers erection has been completed in WTP MCC room
- 20/5 Tonne EOT crane commissioning has been completed.
- 1000KVA DG set cranking has been completed & Alternator has been shifted for service to M/S Stamford.
- Chequered plates erection has been completed at TG 3mtr MCC room and pumphouse MCC room.
- Site visited by APEPDCL DE Mr. Simhachalamnaidu & AE Mr. Nageswara Rao.



Cable tray erection at TG 0mtr cable gallery



Cable tray erection at TG 8mtr



Cable tray supports and platform work at boiler area



Earth flat connectivity at TG 8mtr
Control room



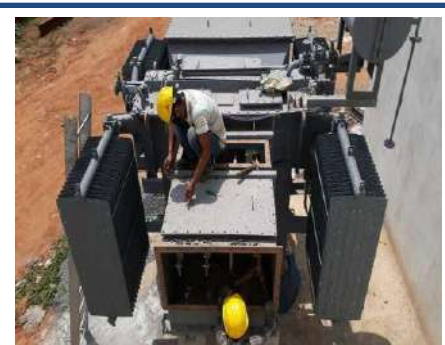
Cable tray raisers erection from TG
cable gallery to pipe rack gallery



Cable tray erection in pipe rack gallery
towards WTP



Bus bar tightening for LTPCC panel



Auxiliary transformers jumpers fixing and bus bar tightening



Boiler#1 & 2 VFD panels erected



PDB – 2 panel in compressor room
Charged



Cable tray erection in compressor room



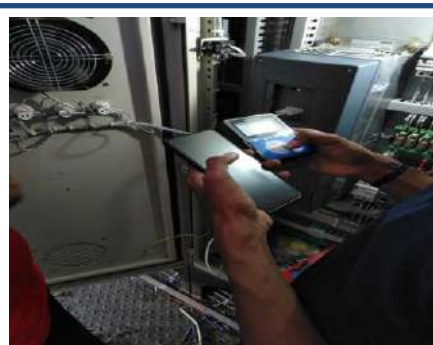
Pump house MCC panel charged



Cable tray erection in pump house
MCC room



WTP MCC & PLC panels erected



20/5 Tonne EOT crane commissioned



DG set cranking completed



Alternator sent for service



Chequered plates erected in TG 3mtr MCC & Pump house MCC room



APEPDCL DE Mr. Simhachalamnaidu & AE Mr. Nageswara Rao visit

Overall view of 33/11 KV Switch Yard



SAFETY**1. Safety Induction Trainings:**

- a. Total Trainings : 15
b. Total Workers attended : 98

S.No.	Company	Trainings conducted	No. of members
1	Ceekay Associates Pvt. Ltd.	05	73
2	'Supertech Engineers	07	12
3	Friends Electricals	00	00
4	BOLDROCCHI India Pvt Ltd.	01	10
5	Others	02	03

**Ceekay Associates****Supertech Engineers****Boldrocchi India Pvt Ltd.****Dhrithi****JUWMVL**

2. Job Specific Trainings:

- Total Trainings : 04
- Total Workers attended: 55

S.No.	Company	Trainings conducted	No. of members
1	Ceekay Associates Pvt. Ltd.	03	50
2	'Supertech Engineers	01	05



Ceekay Associates



'Supertech Engineers

- Total 113 no. of Permits (i.e. Height, Hot, Rigging, Scaffolding, Excavation and Night) taken by M/s. Ceekay Associates Pvt. Ltd., M/s. 'Supertech Engineers, M/s. Friends Electricals and M/s. BOLDROCCHI.

4. Rigging Plans :

M/s. Supertech Engineers :

- 02 no.of Rigging plans has been submitted for Ash Hopper for Boiler -I & II .

M/s. Boldrocchi India Pvt Ltd :

- 01 no .of Rigging plan has been submitted for Hydrated Lime Silo
- 01 no .of Rigging plan has been submitted for Scrubber Cone – 1&2.
- 01 no .of Rigging plan has been submitted for Quick Lime Silo
- 01 no .of Rigging plan has been submitted for Scrubber Shell -1
- 01 no .of Rigging plan has been submitted for Scrubber Shell -2
- 01 no .of Rigging plan has been submitted for Waste Silo -2 Shell

5. Inspectons :

On 24/08/2020, Load test has been conducted for EOT crane by authorized third party as per AP's factory act.



ENVIRONMENTAL / PLANTATIONS

1. Applied Plant Authorization renewal application in APPCB online portal and application no is 1153734, status at MS (Member Secretary) in portal. Application forwarded to Member secretary, APPCB, and Vijayawada.
2. Landscape development at Miniature Shed, Security Room and near Main Gate Entry are Maintained regularly
3. Plantation outside & near boundary wall, Office, stores are maintained regularly.
4. Saplings are available at site for Green Belt Development.



Regular maintenance of gardening and Green belt is going at site

HEALTH

1. On 08.08.2020, JUWMLV employee Mr. Mani Kumar - Junior Engineer (Mechanical) has been sick from two days and test as positive. As per GOAP guidelines, he has been self-isolated at his residence and taking the required treatment.
2. Regular Health Checkup is going at site. 57 members have been attended and checked their health checkup for the month of August – 2020.
3. Monitoring of pulse and oxygen level for all employees.
4. Providing Health drink (Kashayam) to all employees to boost up the immunity
5. Thermal screening conducted to all contractor workmen/staff at Main gate and labor colonies with infra-red Thermometer and record maintained.
6. Social distancing maintained while entering the main gate.
7. Spraying the disinfection agent at labor colonies and site regularly.
8. Sanitizing all utility vehicles / staff vehicles while entering to the site



Thermal Screening photos

Thermal Screening at Main Gate



Social Distancng at site



Vehicles Sanitizing



Hand Sanitizing at gate



Sodium hyochlorite spraying at office areas.



Sodium hyochlorite spraying at Site areas.



Sodium hyochlorite spraying at Labor colonies



Sodium hyochlorite spraying at Guest house



Supply of Health Drink to all employees



Checking Pulse and Oxygen levels of all employees with Pulse Oximeter



Regular Health Check is going at site

